

SPACIOUS ONE BEDROOM APARTMENT



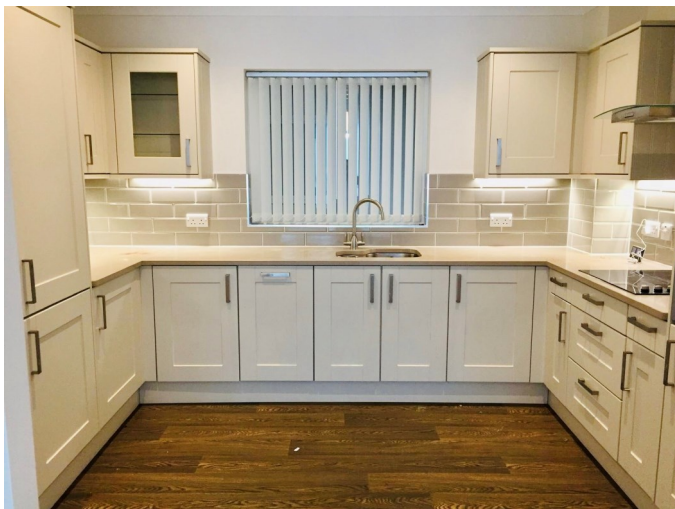
VIEW FROM APARTMENT

- ◆ Generous open plan living area
- ◆ Level access to shared terraces
- ◆ En-suite bathroom
- ◆ Separate laundry room
- ◆ Easy to maintain



SHARED BALCONY

- ◆ All carpets and flooring included
- ◆ Close to lifts and stairs
- ◆ All white goods included
- ◆ Previously owned
- ◆ Sold unfurnished



PHOTOGRAPHS FOR ILLUSTRATIVE PURPOSES ONLY

15 BROOKMEAD

APARTMENT TYPE N

PLOTS 2, 6-7, 9-10 and 15

BEDROOMS 1

SHOWER ROOMS 1

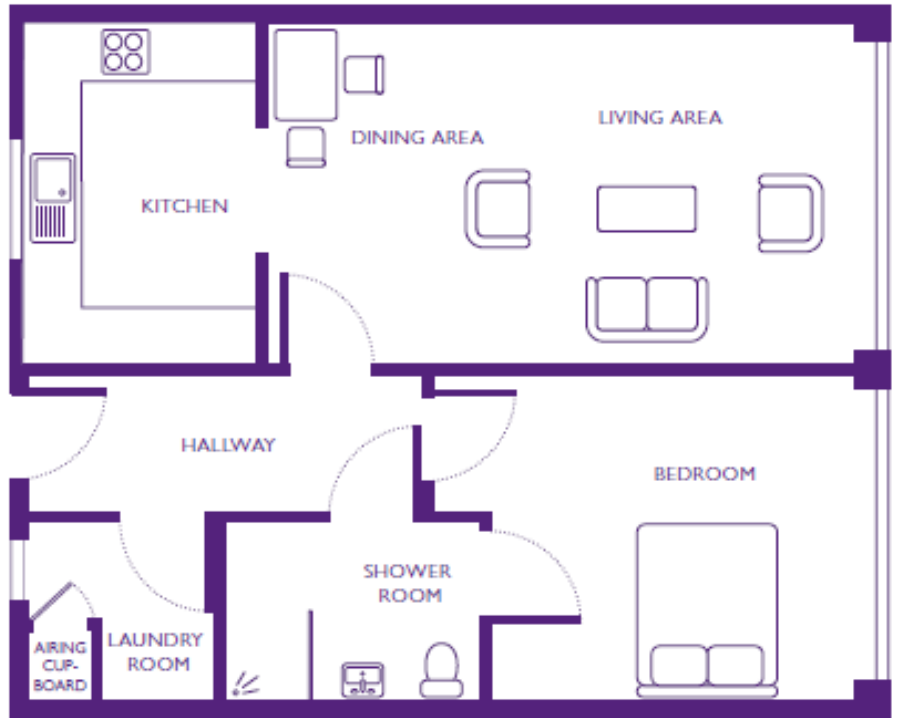
Kitchen/dining/living area
9.2m x 3.6m / 30'2" x 11'10"

Bedroom 1
3.6m x 4.7m / 11'10" x 15'5"

Shower room
2.8m x 2.0m / 9'2" x 6'7"

Laundry room
2.1m x 2.0m / 6'11" x 6'7"

Total area
68m² / 81yd²



Building converted in August 2017. Please note that this apartment is sold unfurnished and furniture in this floorplan is for reference only. Dimensions shown are maximum. Some plots are handed compared to floorplans. Certain particulars may vary, please check with our sales team. The floorplans depict a typical layout of this apartment type. Floorplans are not to scale. A surrender fee is payable when the property is returned to the Trust (ranging from 1% to 10% of purchase price depending on the lease and length of occupation).

*Neff cooker, Bosch fridge/freezer, dishwasher, washing machine and tumble dryer included.

SALES ENQUIRIES

If you are interested in viewing any of our apartments or would like some further information please call our Sales Team on

0117 949 4004

email sales.team@stmonicatrust.org.uk



St Monica Trust

