

TOP FLOOR APARTMENT WITH STUNNING VIEWS



- ◆ Floor to ceiling picture windows
- ◆ Sold unfurnished
- ◆ Panoramic countryside views
- ◆ All carpets and flooring included
- ◆ Two bedrooms, one en-suite
- ◆ Close to lifts and stairs
- ◆ Separate laundry room
- ◆ Previously owned

TOP FLOOR HALLWAY



PIANO LOUNGE



94 RIVER HOUSE

APARTMENT TYPE J

PLOTS 93-102 and 105-106

BEDROOMS 2

SHOWER ROOMS 1 plus WC

Kitchen/dining/living area
7.6m x 3.6m / 24'11" x 11'10"

Bedroom 1
3.4m x 3.6m / 11'2" x 11'10"

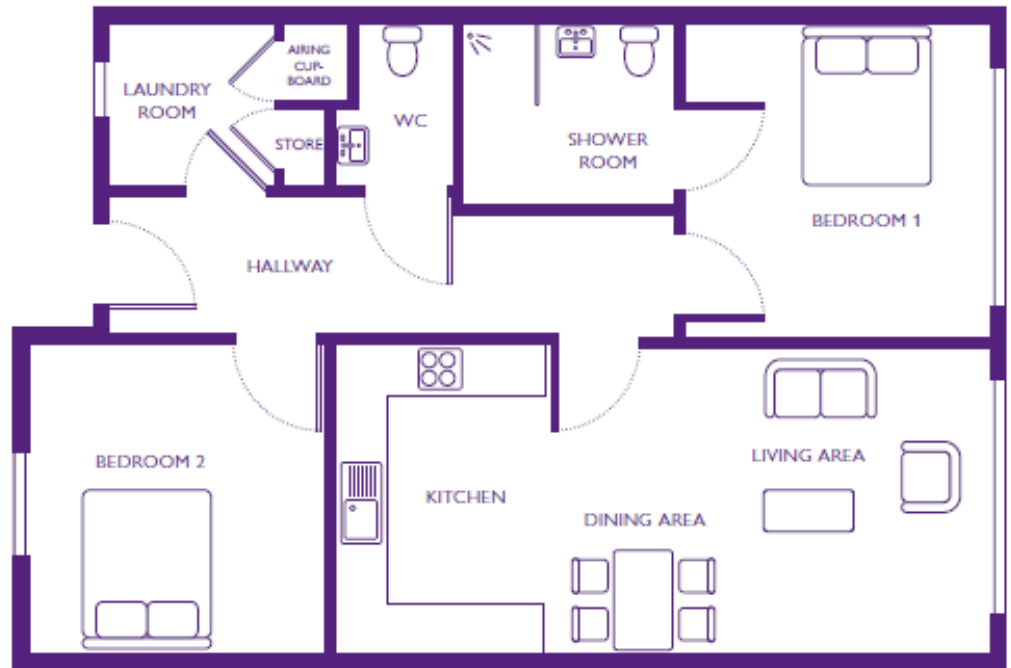
Shower room
2.5m x 2.0m / 8'2" x 6'7"

Bedroom 2
3.4m x 3.6m / 11'2" x 11'10"

WC
1.4m x 1.8m / 4'7" x 5'11"

Laundry room
1.8m x 1.8m / 5'11" x 5'11"

Total area
78m² / 93yd²



Dimensions shown are maximum. Some plots are handed compared to floorplans. Certain particulars may vary, please check with our sales team. The floor plans depict a typical layout of this apartment type. Floor plans are not to scale. September 2016.

Building converted in August 2017. Please note that this apartment is sold unfurnished and furniture in this floorplan is for reference only. Dimensions shown are maximum. Some plots are handed compared to floorplans. Certain particulars may vary, please check with our sales team. The floorplans depict a typical layout of this apartment type. Floorplans are not to scale. A surrender fee is payable when the property is returned to the Trust (ranging from 1% to 10% of purchase price depending on the lease and length of occupation).

*Neff cooker, Bosch fridge/freezer, dishwasher, washing machine and tumble dryer included.

SALES ENQUIRIES

If you are interested in viewing any of our apartments or would like some further information please call our Sales Team on

0117 949 4004



St Monica Trust

email sales.team@stmonicastrust.org.uk

