



The Chocolate Quarter

14 Brookmead

£426,500

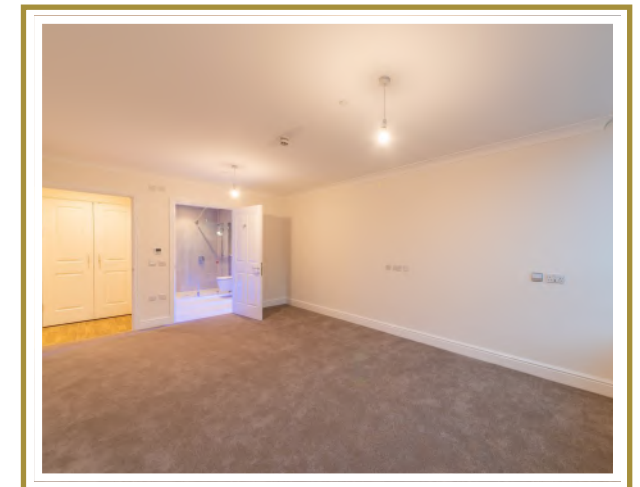


14 Brookmead

- Two bedrooms, one en-suite
- Separate shower room
- Large picture windows
- Walk-in showers and underfloor heating
- Contemporary, well designed kitchen including Neff appliances
- Separate laundry
- All white goods included

Last remaining exclusive 'Stanton' apartment, one of only five in the development. This apartment enjoys easy access to a generous shared patio, large picture windows and a very spacious open plan living area. Its kitchen follows a Chantilly cream colour scheme with chestnut mushroom cabinets, off-white quartz worktop, off-white tiles and a natural oak wooden effect flooring.

Energy Efficiency Rating: B | Service Charge: £7,278pa | Council Tax: Band E £2,264.48pa



APARTMENT TYPE L

PLOTS 1, 3, 5, 11, 14 and 16

BEDROOMS 2

SHOWER ROOMS 2

Kitchen/dining/living area

9.2m x 4.1m / 30'2" x 13'5"

Bedroom 1

5.7m x 3.6m / 18'8" x 11'10"

Shower room 1

3.4m x 2.2m / 11'2" x 7'3"

Bedroom 2

3.4m x 3.7m / 11'2" x 12'2"

Shower room 2

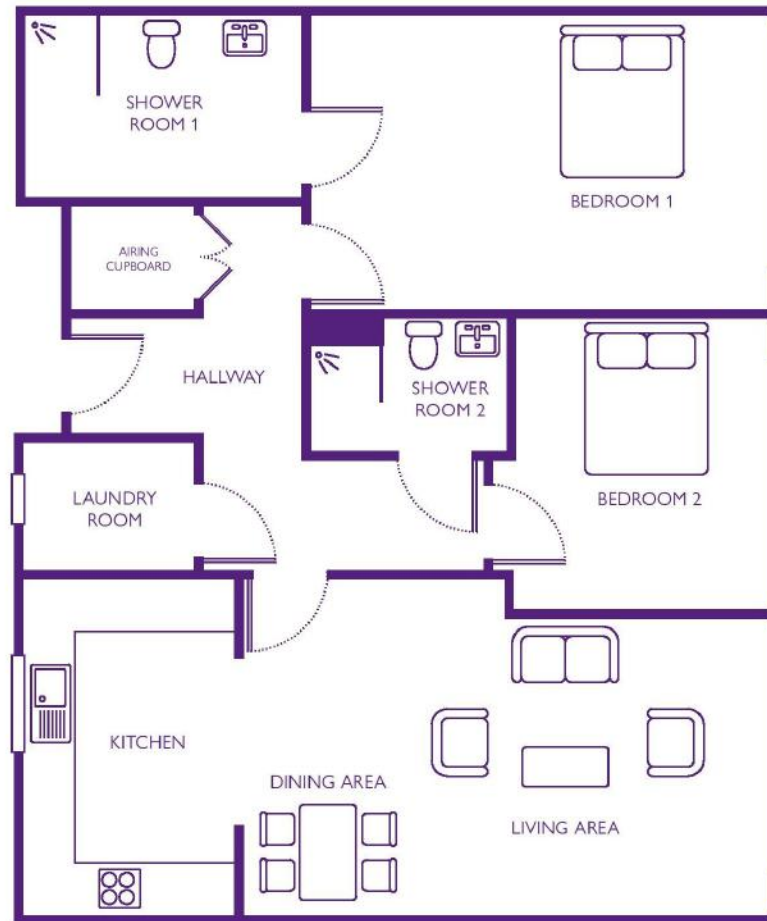
2.5m x 1.7m / 8'2" x 5'7"

Laundry room

2.1m x 1.5m / 6'11" x 4'11"

Total area

101m² / 120yd²



Please note that this apartment is sold unfurnished and furniture in this floorplan is for reference only. Dimensions shown are maximum. Some plots are handed compared to floorplans. Certain particulars may vary, please check with our sales team. The floorplans depict a typical layout of this apartment type. Floorplans are not to scale. A surrender fee is payable when the property is returned to the Trust.



If you are interested in viewing this property please contact our Sales team on 0117 363 7160 or by email on sales.team@stmonicatrust.org.uk to arrange an appointment. Office hours are 10am - 4pm Monday to Friday & 11am - 4pm on Saturday.