

# LANSDOWN

Show home opening times are shown on the website  
 The Chocolate Quarter, Somerdale, Somerdale Road,  
 Keynsham, Bristol BS31 2AU

If you have any questions, would like to arrange a viewing or  
 you would like more information please call **0117 949 4004**  
 or email [sales.team@stmonicatrust.org.uk](mailto:sales.team@stmonicatrust.org.uk)

[www.TheChocolateQuarter.org.uk](http://www.TheChocolateQuarter.org.uk)

## APARTMENT TYPE E

**PLOT 74**

**BEDROOMS 2**

**SHOWER ROOMS 1 plus WC**

**Kitchen/living area**

7.7m x 3.2m / 25'3" x 10'6"

**Dining area**

3.2m x 4.3m / 10'6" x 14'1"

**Bedroom 1**

3.6m x 3.6m / 11'10" x 11'10"

**Shower room**

2.5m x 2.0m / 8'2" x 6'7"

**Bedroom 2**

4.2m x 3.1m / 13'9" x 10'2"

**WC**

1.4m x 1.8m / 4'7" x 5'11"

**Laundry room**

1.9m x 1.8m / 6'3" x 5'11"

**Private terrace 1**

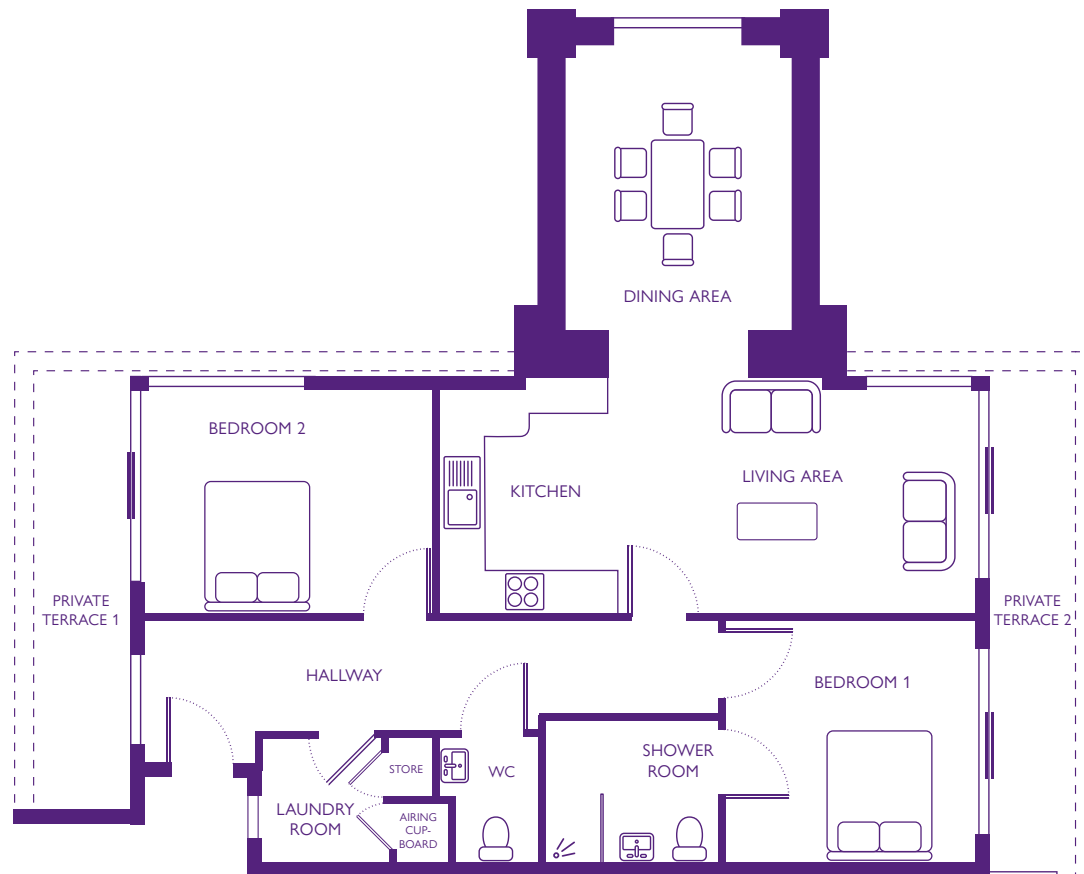
1.3m x 7.2m / 4'3" x 23'7"

**Private terrace 2**

1.1m x 7.5m / 3'7" x 24'7"

**Total area**

93m<sup>2</sup> / 111yd<sup>2</sup>



Dimensions shown are maximum. Some plots are handed compared to floorplans. Certain particulars may vary, please check with our sales team.  
 The floor plans depict a typical layout of this apartment type. Floor plans are not to scale. September 2016.