

Show home opening times are shown on the website  
 The Chocolate Quarter, Somerdale, Somerdale Road,  
 Keynsham, Bristol BS31 2AU

If you have any questions, would like to arrange a viewing or  
 you would like more information please call **0117 949 4004**  
 or email [sales.team@stmonicastrust.org.uk](mailto:sales.team@stmonicastrust.org.uk)

[www.TheChocolateQuarter.org.uk](http://www.TheChocolateQuarter.org.uk)

## APARTMENT TYPE K

**PLOT 92**

**BEDROOMS 2**

**SHOWER ROOMS 1 plus WC**

**Kitchen/dining area**

7.6m x 3.1m / 24'11" x 10'2"

**Living area**

4.8m x 2.8m / 15'9" x 9'2"

**Bedroom 1**

3.4m x 3.6m / 11'2" x 11'10"

**Shower room**

2.5m x 2.0m / 8'2" x 6'7"

**Bedroom 2**

4.0m x 3.2m / 13'1" x 10'6"

**WC**

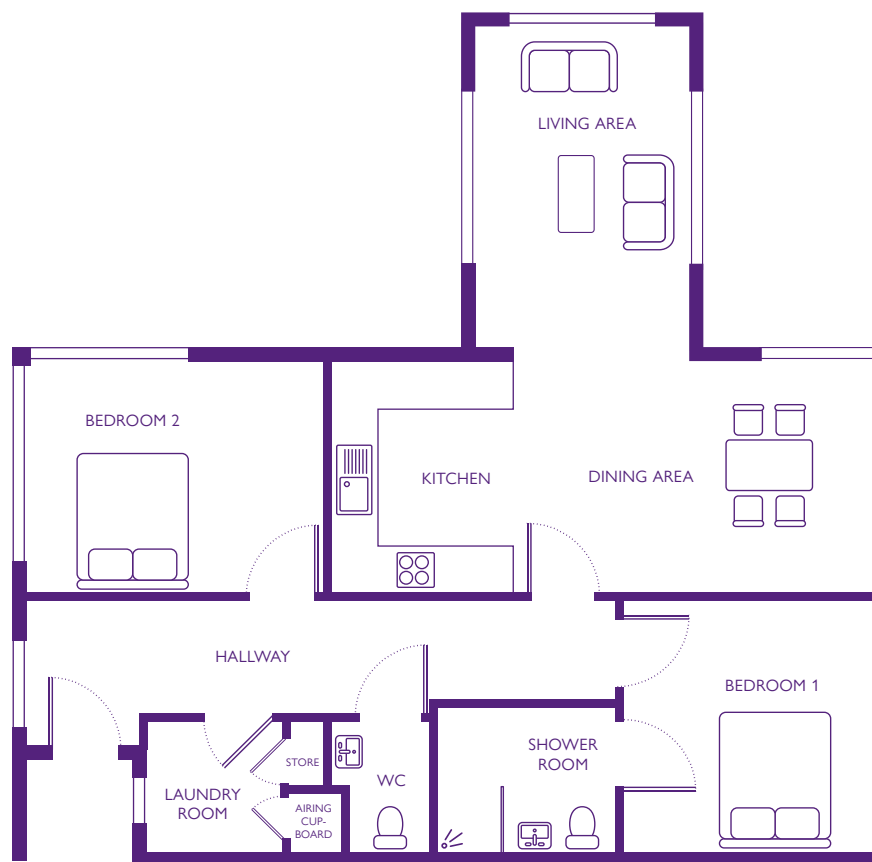
1.4m x 1.8m / 4'7" x 5'11"

**Laundry room**

1.8m x 1.8m / 5'11" x 5'11"

**Total area**

79m<sup>2</sup> / 94yd<sup>2</sup>



Dimensions shown are maximum. Some plots are handed compared to floorplans. Certain particulars may vary, please check with our sales team.  
 The floor plans depict a typical layout of this apartment type. Floor plans are not to scale. September 2016.