

CHEWTON

Show home opening times are shown on the website

The Chocolate Quarter, Somerdale, Somerdale Road,
 Keynsham, Bristol BS31 2AU

If you have any questions, would like to arrange a viewing or
 you would like more information please call **0117 949 4004**
 or email sales.team@stmonicatrust.org.uk

www.TheChocolateQuarter.org.uk

APARTMENT TYPE B

PLOTS 2-4, 6-14, 16-18, 21-23, 25-32,
 34-36, 39-41, 43-50, 52-54, 57-59, 61-68
 and 70-72

BEDROOMS 2

SHOWER ROOMS 1 plus WC

Kitchen/dining/living area

8.7m x 3.6m / 28'7" x 11'10"

Bedroom 1

4.8m x 3.6m / 15'9" x 11'10"

Shower room

2.5m x 2.0m / 8'2" x 6'7"

Bedroom 2

3.6m x 3.6m / 11'10" x 11'10"

WC

1.4m x 1.8m / 4'7" x 5'11"

Laundry room

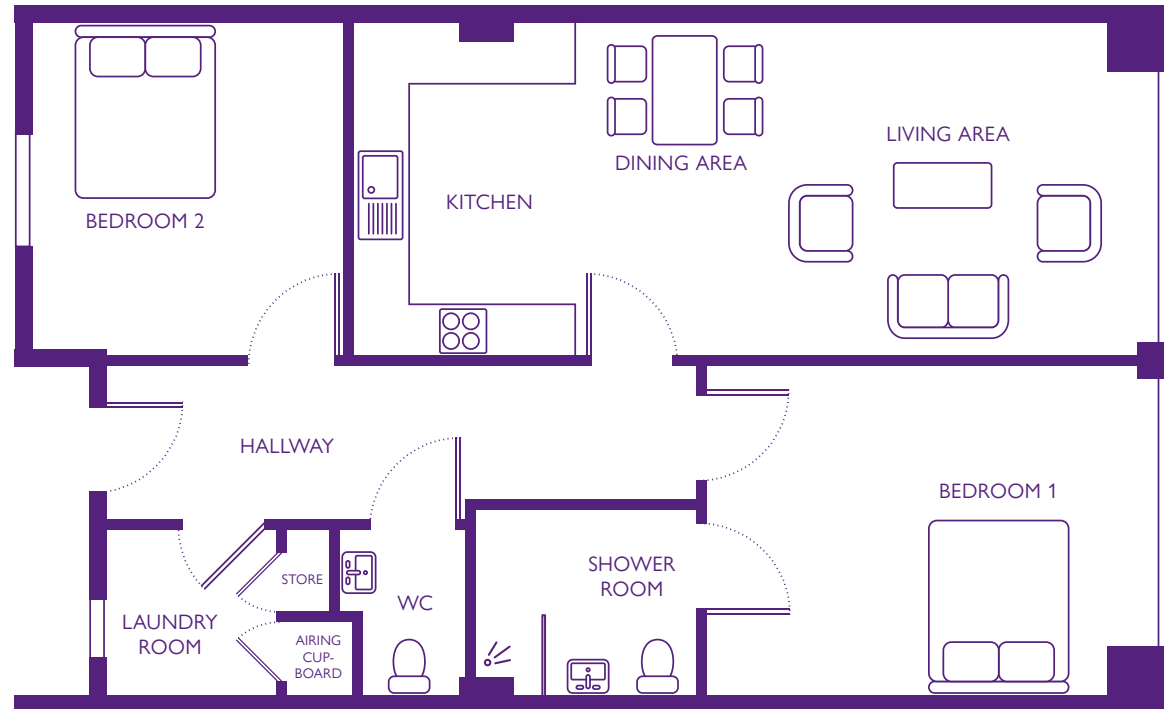
1.9m x 1.8m / 6'3" x 5'11"

Total area

87m² / 104yd²

Private terrace

This apartment may be available with a
 terrace, please refer to building plans and
 speak to the sales team for availability.



Dimensions shown are maximum. Some plots are handed compared to floorplans. Certain particulars may vary, please check with our sales team.
 The floor plans depict a typical layout of this apartment type. Floor plans are not to scale. September 2016.