

PUBLOW

Show home opening times are shown on the website
 The Chocolate Quarter, Somerdale, Somerdale Road,
 Keynsham, Bristol BS31 2AU

If you have any questions, would like to arrange a viewing or
 you would like more information please call **0117 949 4004**
 or email sales.team@stmonicastrust.org.uk

www.TheChocolateQuarter.org.uk

APARTMENT TYPE R

PLOTS 18, 22-23, 25-26 and 30

BEDROOMS 1

SHOWER ROOMS 1

Kitchen/dining/living area

7.6m x 3.6m / 24'11" x 11'10"

Bedroom 1

3.4m x 3.6m / 11'2" x 11'10"

Shower room

2.6m x 2.0m / 8'6" x 6'7"

Laundry room

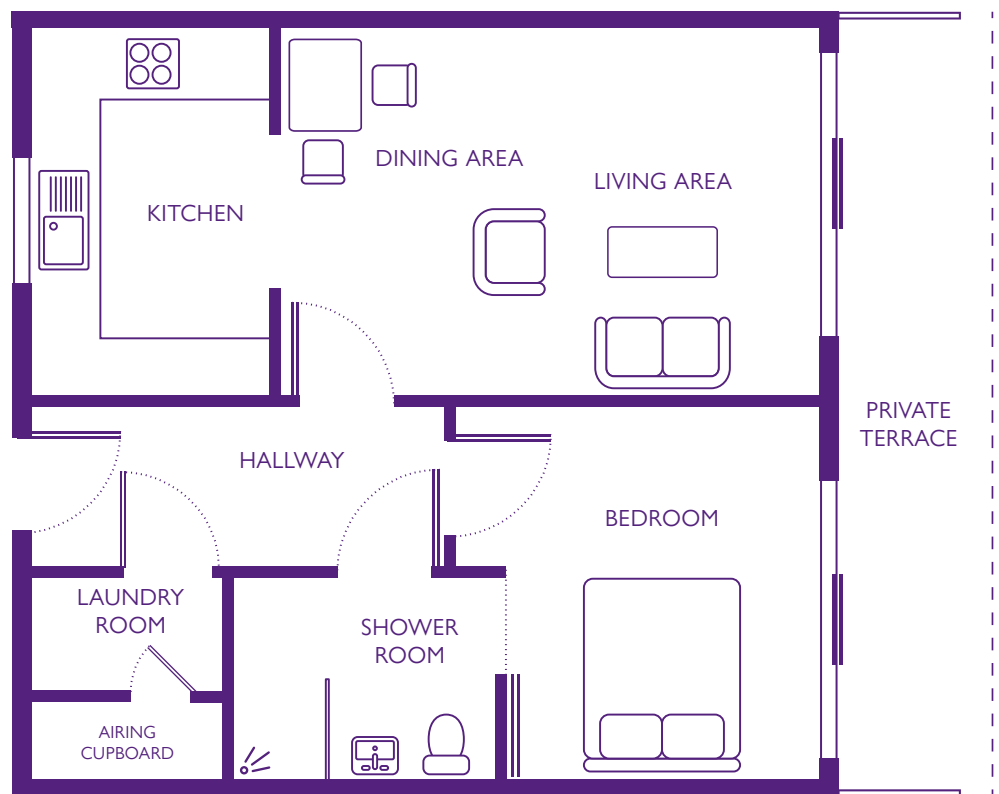
1.2m x 1.8m / 3'11" x 5'11"

Private terrace

7.6m x 1.3m / 24'11" x 4'3"

Total area

55m² / 65yd²



Dimensions shown are maximum. Some plots are handed compared to floorplans. Certain particulars may vary, please check with our sales team.
 The floor plans depict a typical layout of this apartment type. Floor plans are not to scale. September 2016.