

# HUNSTRETE

Show home opening times are shown on the website  
 The Chocolate Quarter, Somerdale, Somerdale Road,  
 Keynsham, Bristol BS31 2AU

If you have any questions, would like to arrange a viewing or  
 you would like more information please call **0117 949 4004**  
 or email [sales.team@stmonicatrust.org.uk](mailto:sales.team@stmonicatrust.org.uk)

[www.TheChocolateQuarter.org.uk](http://www.TheChocolateQuarter.org.uk)

## APARTMENT TYPE A

**PLOTS** 1, 20, 38 and 56

**BEDROOMS** 2

**SHOWER ROOMS** 2 plus WC

**Kitchen/living area**

8.9m x 3.5m / 29'2" x 11'6"

**Dining area**

3.3m x 4.1m / 10'10" x 13'5"

**Bedroom 1**

5.1m x 3.6m / 16'9" x 11'10"

**Shower room 1**

3.0m x 1.8m / 9'10" x 5'11"

**Bedroom 2**

3.5m x 4.5m / 11'6" x 14'8"

**Shower room 2**

2.5m x 1.8m / 8'2" x 5'11"

**WC**

1.4m x 1.8m / 4'7" x 5'11"

**Laundry room**

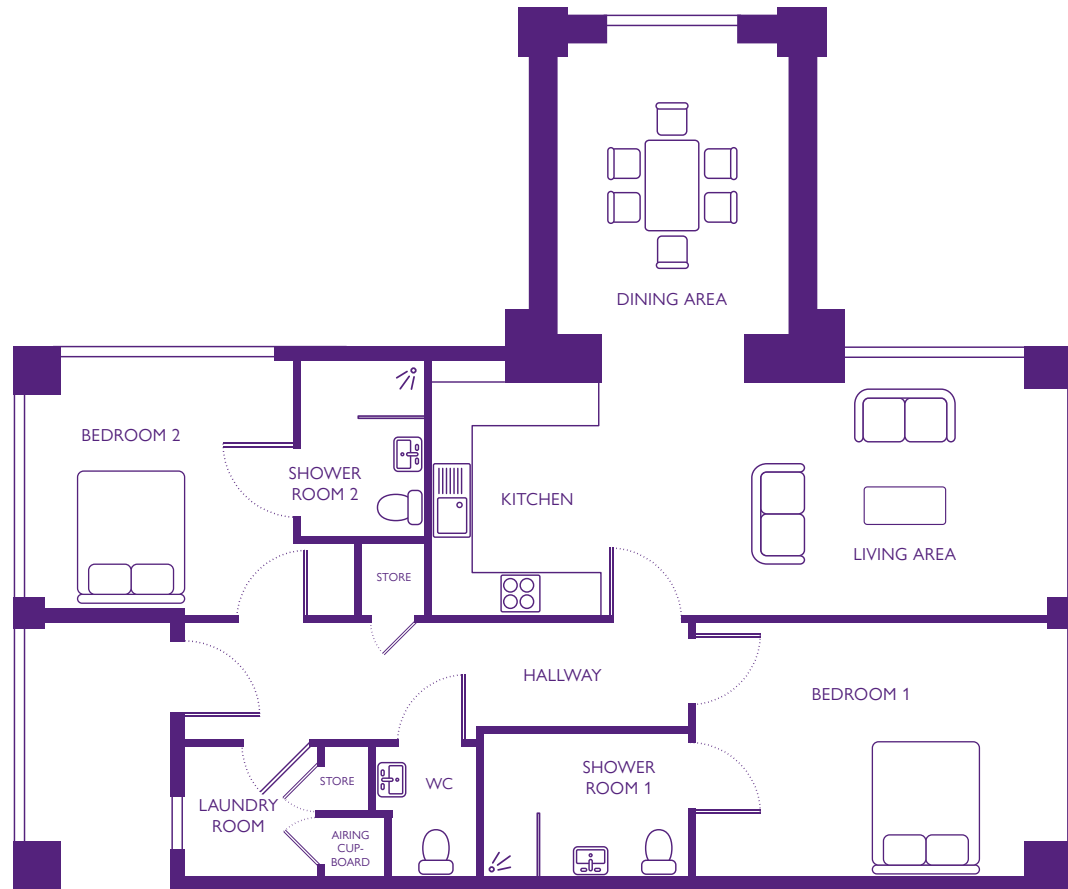
1.8m x 1.8m / 5'11" x 5'11"

**Total area**

111m<sup>2</sup> / 133yd<sup>2</sup>

**Private terrace**

This apartment may be available with a  
 terrace, please refer to building plans and  
 speak to the sales team for availability.



Dimensions shown are maximum. Some plots are handed compared to floorplans. Certain particulars may vary, please check with our sales team.  
 The floor plans depict a typical layout of this apartment type. Floor plans are not to scale. September 2016.