

Show home opening times are shown on the website  
 The Chocolate Quarter, Somerdale, Somerdale Road,  
 Keynsham, Bristol BS31 2AU

If you have any questions, would like to arrange a viewing or  
 you would like more information please call **0117 949 4004**  
 or email [sales.team@stmonicastrust.org.uk](mailto:sales.team@stmonicastrust.org.uk)

[www.TheChocolateQuarter.org.uk](http://www.TheChocolateQuarter.org.uk)

## APARTMENT TYPE P

**PLOTS** 20 and 28

**BEDROOMS** 2

**SHOWER ROOMS** 1 plus WC

### Kitchen/dining/living area

6.7m x 3.4m / 22'0" x 11'2"

### Bedroom 1

5.0m x 3.5m / 16'5" x 11'6"

### Shower room

2.4m x 2.2m / 7'10" x 7'3"

### Bedroom 2

3.5m x 3.3m / 11'6" x 10'10"

### WC

1.6m x 1.5m / 5'3" x 4'11"

### Laundry room

1.6m x 1.5m / 5'3" x 4'11"

### Private terrace 1

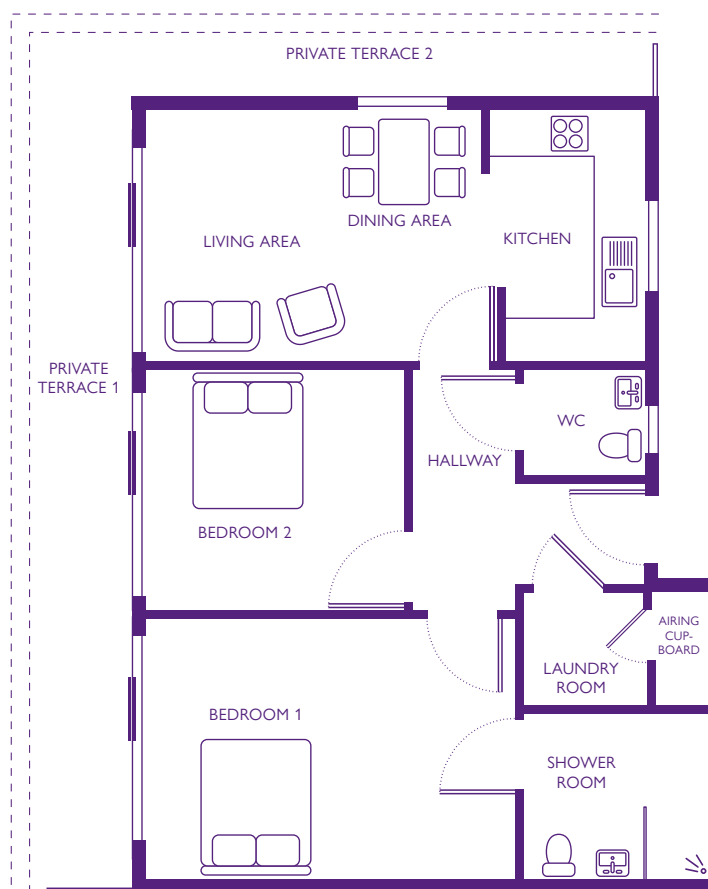
1.3m x 11.5m / 4'3" x 37'9"

### Private terrace 2

7.2m x 0.7m / 23'7" x 2'4"

### Total area

73m<sup>2</sup> / 87yd<sup>2</sup>



Dimensions shown are maximum. Some plots are handed compared to floorplans. Certain particulars may vary, please check with our sales team.  
 The floor plans depict a typical layout of this apartment type. Floor plans are not to scale. September 2016.